

Jackson County, AL



GREATER CHATTANOOGA
ECONOMIC PARTNERSHIP



Jackson County is uniquely situated near key major markets and is located one hour from Chattanooga, 45 minutes from Huntsville, and two hours from Birmingham and Nashville, which gives the area easy access to the assets offered in these cities. The county's multi-modal transportation infrastructure, which includes access to interstate highways, mainline rail service, and navigable waterways, allows business and industry to reach customer markets quickly and efficiently.

Hwy. 72 runs through Jackson County and five major interstates are within an hour's drive including 24, 59, 65, 75 and 565. Rail services is provided by CSX, Norfolk Southern and Sequatchie Valley Railroad.

General aviation services are available at the Scottsboro Municipal Airport (Runway: 5,250 feet) and the Stevenson Municipal Airport (Runway: 4,100 feet). The Chattanooga Metropolitan Airport, located within 67 miles of Jackson County offers non-stop service to

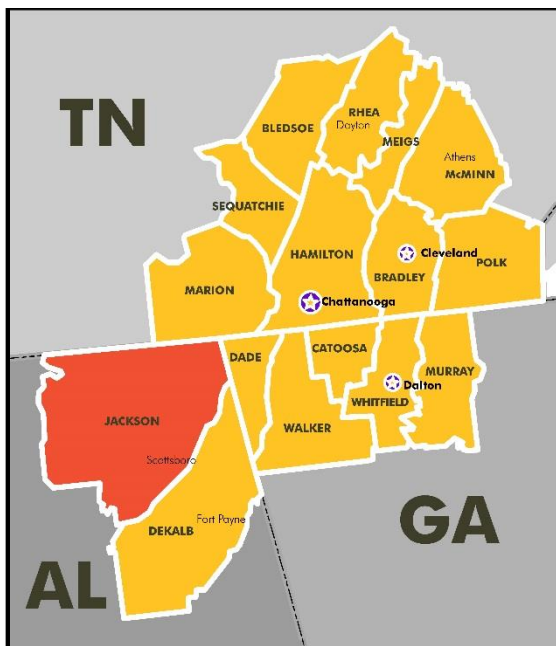
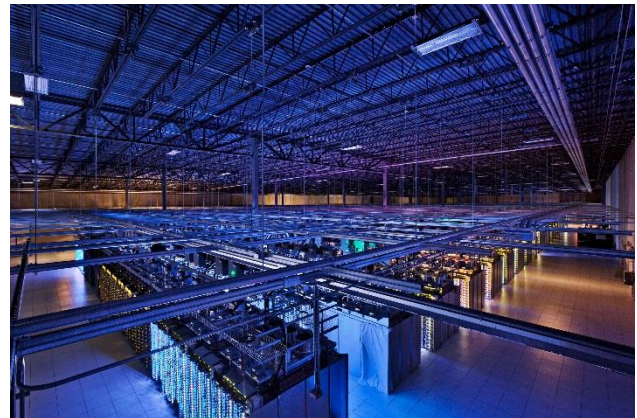
nine locations throughout the U.S. Air cargo is also available. Airlines serving the Chattanooga airport include: Allegiant, American Airlines, American Eagle, Delta and United Airlines.

There are three industrial parks in the area. The Jackson County Industrial Park has 311 acres with 281 acres of land still available. The Scottsboro Industrial Park Rails Sites have a total of 294 acres with 40 available. The Stevenson Industrial Park features 42 acres and all are available. All utilities are available at the parks. There are several Industrial buildings available as well.

With a strong K-12 school system, as well as the leading technical education program in Alabama and proximity to major colleges and universities, Jackson County offers a highly skilled workforce, along with the resources to provide advanced employee training for businesses and industry in the county.

Highlands Medical Center is a non-profit arm of Jackson County Health Care Authority. The medical center has a staff of 92 and 170 licensed beds and ten specialty care beds.

The scenic beauty of Jackson County is truly remarkable with its picturesque mountains, vast natural lands, scenic waterways and an abundance of caves, springs and rocky bluffs. More information is available at jacksoncountyyeda.org.



MAJOR EMPLOYERS

COMPANY	EMPLOYEES
Maples Industries	1,350
Jackson Co. Board of Education	735
Highlands Medical Center	731
HTPG Inc.	464
Lozier Corporation	444

Source: Companies

POPULATION

Population 2019	53,460
Population 2024	53,668
Households 2019	21,506
Median Age	43.4
Median Household Income	\$42,833
Per Capita Income	\$21,666

Source: Gale Research

ANNOUNCED PROJECTS (2016-2020)

Number of Projects	14
New Jobs	276
Capital Investment	\$63,788,500

Source: GCEP

LABOR FORCE (2020 ANNUAL AVERAGE)

Labor Force	22,840
Unemployment Rate	5.3%

Source: U.S. Department of Labor, Bureau of Labor Statistics

EDUCATIONAL ATTAINMENT

Population 25+	38,196
High School Graduate (only)	38.5%
Some College	19.1%
Associate's Degree	8.2%
Bachelor's Degree	8.5%
Graduate or Professional	4.5%
ACT-County	20.2/17.8
ACT-State	18.9

Source: Gale Research, Alabama Department of Education

EDUCATION

Public Schools	21
Public School Enrollment	7,612
Private Schools	4
Private School Enrollment	260
School Districts	2
Colleges & Universities	1
College & University Enrollment	2,981

Source: Alabama Department of Education, Individual Schools and GCEP

UNEMPLOYMENT INSURANCE

New Employers (Maximum)	2.7%
Experience Rate Range	0.65% to 6.8%
Taxable Base	\$8,000

Source: ADP

SALES TAX - GENERAL AND SPECIAL PROVISIONS

Sales Tax Rate-State	4%
Sales Tax Rate-County	2%
Electricity* (State/Local)	4%/0%
Piped Natural Gas* (State/Local)	4%/0%
Mfg. Water (State/Local)	4%/0%
	(exemption possible)
Mfg. Fuels (State/Local)	4%/2%
Mfg. Equipment (State/Local)	1.5%/2%
Telecommunications (State/Local)	6%/0%

*Residential
Source: Alabama Department of Revenue

PROPERTY TAX (PER \$1,000 OF ASSESSED VALUE)

Property Taxes-County Incorporated	Varies - \$30 to \$50
Property Taxes-County Unincorporated	\$30.0
Property Taxes-County Seat	\$48.5

Source: Alabama Department of Revenue

INVENTORY TAX

Finished Goods	None
Raw Materials	None
Goods in Process	None
Materials Consumed in Manufacturing	None

Source: Alabama Department of Revenue

EMPLOYMENT AND WAGES (2020 ANNUAL AVERAGE)

	% OF TOTAL	WEEKLY WAGES
Natural Resources & Mining	0.4%	\$629
Construction	3.5%	\$796
Manufacturing	33.2%	\$927
Trade, Transportation & Utilities	20.6%	\$611
Information	0.6%	\$1,316
Financial Activities	3.0%	\$950
Professional & Business Services	2.7%	\$809
Education & Health Services	6.9%	\$797
Leisure & Hospitality	7.6%	\$308
Other Services	1.2%	\$564
Government	20.4%	\$816

Source: U.S. Department of Labor, Bureau of Labor Statistics

ACCESSIBILITY

Largest City or Town	Scottsboro
Population-2019	14,436
Miles to Chattanooga	62
Nearest Commercial Airport	Chattanooga Metropolitan Airport
Runway Length	7,400 and 5,575
Miles to Airport	67
Nearest Interstate	I-59
Foreign Trade Zone	No
Population within 50-mile radius	1,206,653

Source: GCEP, Gale Research

UTILITIES

Name of Electricity Provider	Multiple municipal providers
Is Natural Gas Available (Yes/No)	Yes
Name of Natural Gas Provider	Scottsboro Water, Sewer and Gas Board
Name of Water Provider	Scottsboro Water, Sewer and Gas Board
Name of Wastewater Provider	Scottsboro Water, Sewer and Gas Board
Excess System Capacity	Yes

Source: GCEP

CONTACT US

Shelia Shepard
Jackson County Economic Development Authority
 817 South Broad Street
 Scottsboro, AL 35768
 256.574.1331
shepard@scottsboro.org
www.JacksonCountyEDA.org



Charles Wood
Greater Chattanooga Economic Partnership
 811 Broad Street, Suite 100
 Chattanooga, TN 37402
 423.763.4335
cwood@greaterchatt.com
www.greaterchatt.com

